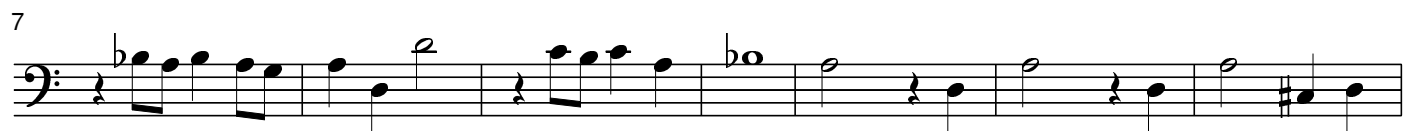


# Fantasie d-moll

nach einer Klavierfantasie von Georg Ph. Telemann

Tempo 144

Orchesterbearbeitung: Egon Poppe



Cello

62



67

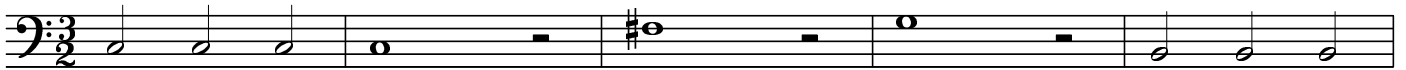


73

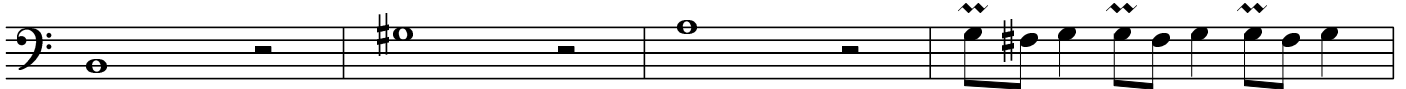


rit.

79 Tempo 120



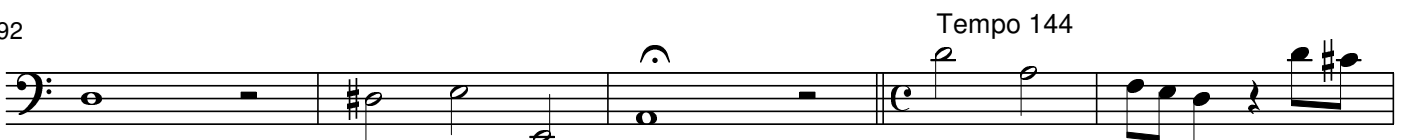
84



88



92



rit.

97



103



110



Cello

116



122



127



133



138



144



151



157



162



168



rit.