

Fantasie d-moll

nach einer Klavierfantasie von Georg Ph. Telemann

Tempo 144

Orchesterbearbeitung: Egon Poppe



Viola

61



67

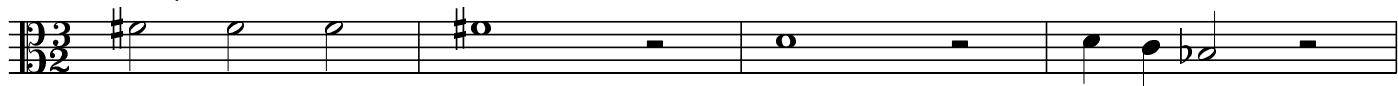


73

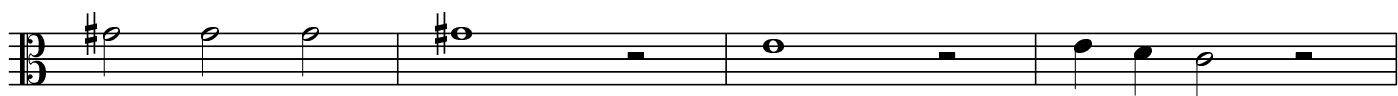


79

Tempo 120



83

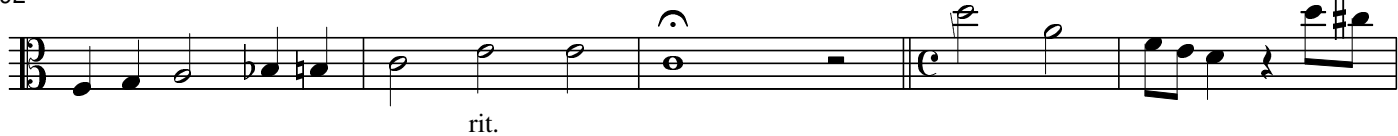


87



92

Tempo 144



97



103



109



Viola

115



121



126



132



138



144



150



156



162



168



rit.