

Violinkonzert a-moll

Joh. Seb. Bach, BWV.1041

Bearbeitung: Egon Poppe



4



11



16



21



26



31



37



43



Violinkonzert a-moll

Joh. Seb. Bach, BWV.1041

Bearbeitung: Egon Poppe

Cembalo

Measures 1-3 of the Cembalo part. The treble clef contains chords and single notes, while the bass clef features a continuous eighth-note accompaniment.

4

Measures 4-7 of the Cembalo part. Measure 4 includes a first ending bracket. The bass clef continues with eighth-note patterns.

8

Measures 8-11 of the Cembalo part. The treble clef shows more complex chordal textures, and the bass clef maintains the eighth-note accompaniment.

12

Measures 12-15 of the Cembalo part. The treble clef features block chords, and the bass clef continues with eighth-note accompaniment.

16

Measures 16-19 of the Cembalo part. The treble clef has chords with some accidentals, and the bass clef continues with eighth-note accompaniment.

20

Measures 20-23 of the Cembalo part. The treble clef shows chords with accidentals, and the bass clef continues with eighth-note accompaniment.

Cembalo

24

28

32

36

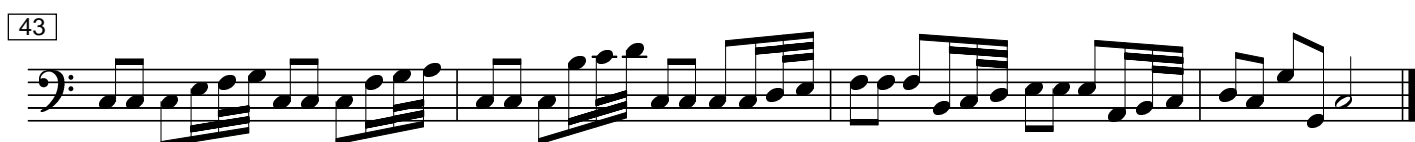
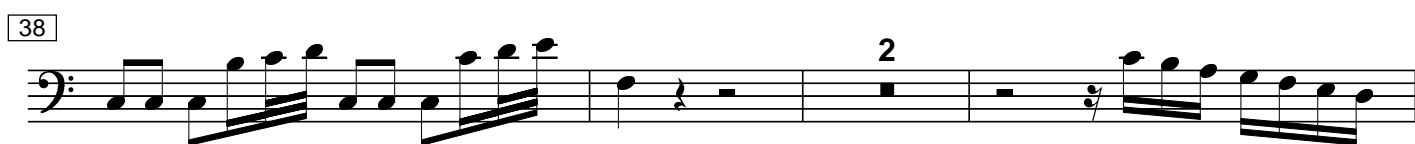
40

44

Violinkonzert a-moll

Joh. Seb. Bach, BWV.1041

Bearbeitung: Egon Poppe



Violinkonzert a-moll

Joh. Seb. Bach, BWV.1041

Bearbeitung: Egon Poppe



4



11



16



21



26



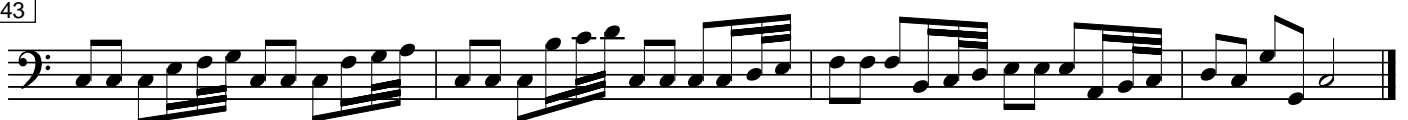
31



37



43



Violinkonzert a-moll

Joh. Seb. Bach, BWV.1041

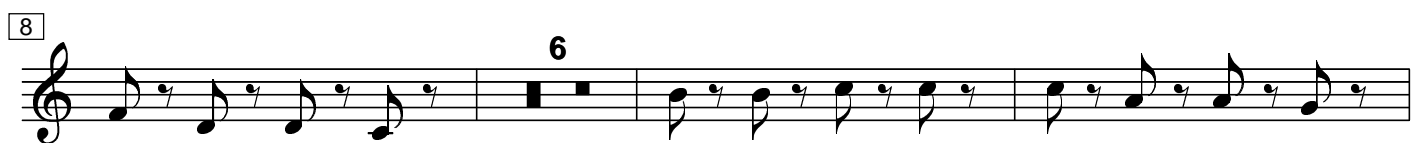
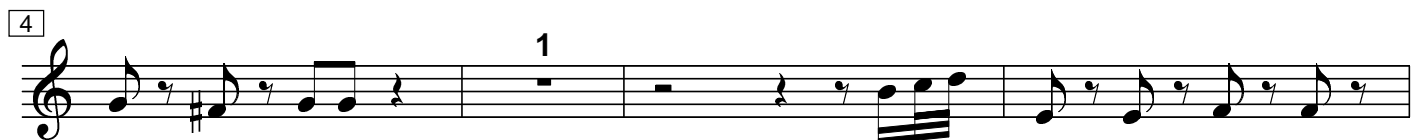
Bearbeitung: Egon Poppe



Violinkonzert a-moll

Joh. Seb. Bach, BWV.1041

Bearbeitung: Egon Poppe



Violinkonzert a-moll

Joh. Seb. Bach, BWV.1041

Bearbeitung: Egon Poppe



6



11



16



20



25



30



34



38



42



Violinkonzert a-moll

Joh. Seb. Bach, BWV.1041

Bearbeitung: Egon Poppe



Violinkonzert a-moll

Joh. Seb. Bach, BWV.1041

Bearbeitung: Egon Poppe

