

# Zu Bethlehem geboren

T: Friedrich Spee 1637 - M: Paris 1599 / geistl. Köln 1638

Gemeinsam aufführbar mit dem Chorsatz für Frauenchor

Egon Poppe



6



11



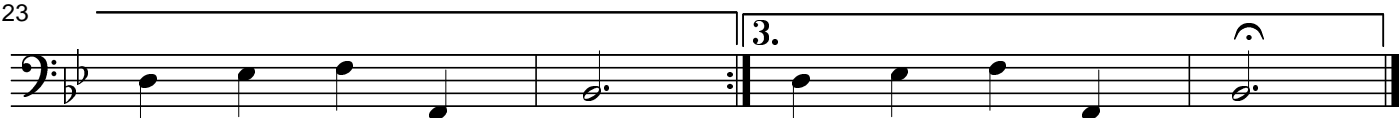
15



19



23

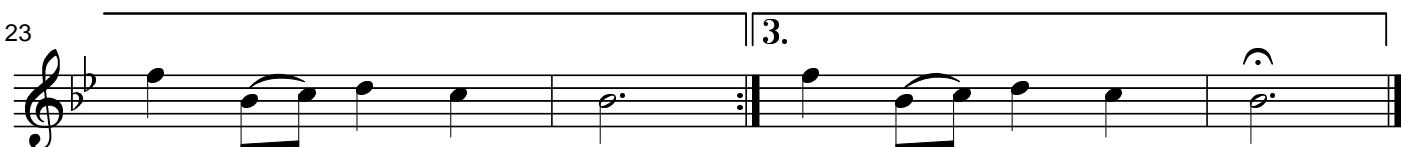
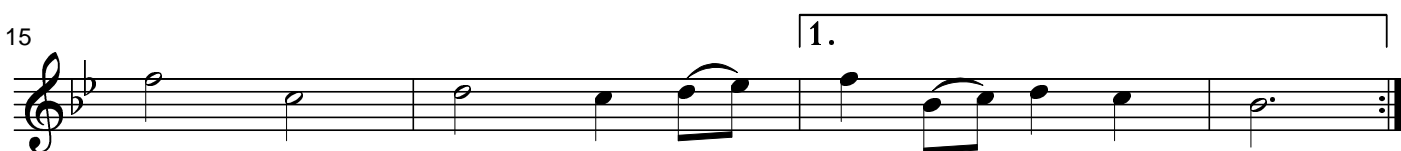
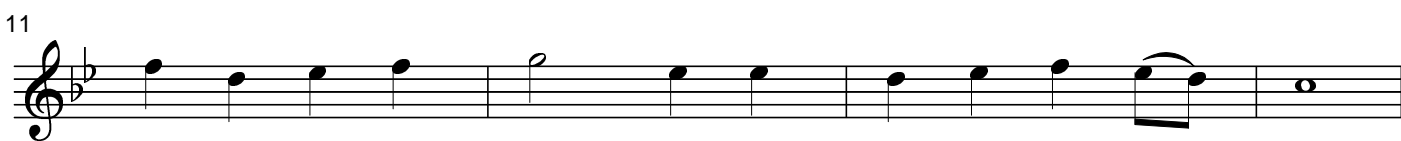
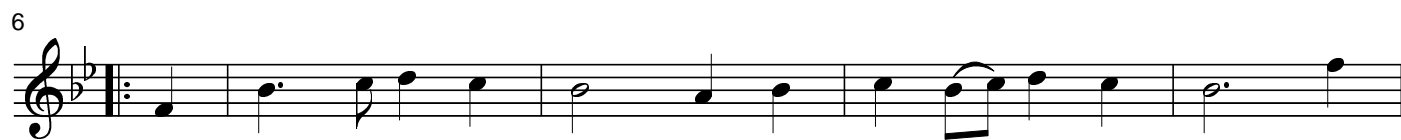


# Zu Bethlehem geboren

T: Friedrich Spee 1637 - M: Paris 1599 / geistl. Köln 1638

Gemeinsam aufführbar mit dem Chorsatz für Frauenchor

Egon Poppe



# Zu Bethlehem geboren

T: Friedrich Spee 1637 - M: Paris 1599 / geistl. Köln 1638

Gemeinsam aufführbar mit dem Chorsatz für Frauenchor

Egon Poppe

The image shows a musical score for Clarinet in B, titled "Zu Bethlehem geboren". The score is written in treble clef with a key signature of one sharp (F#) and a 4/4 time signature. It consists of six staves of music, each starting with a measure number: 1, 7, 11, 15, 19, and 23. The music features a variety of note values, including quarter, eighth, and sixteenth notes, as well as rests. There are several slurs and phrasing marks throughout the piece. The score includes first, second, and third endings, indicated by "1.", "2.", and "3." above the respective measures. The first ending is at measure 15, the second ending is at measure 19, and the third ending is at measure 23. The piece concludes with a double bar line and repeat dots.

# Zu Bethlehem geboren

T: Friedrich Spee 1637 - M: Paris 1599 / geistl. Köln 1638

Gemeinsam aufführbar mit dem Chorsatz für Frauenchor

Egon Poppe

6

11

15

19

23