

# Zu Bethlehem geboren

T: Friedrich Spee 1637 - M: Paris 1599 / geistl. Köln 1638

Gemeinsam aufführbar mit dem Chorsatz für Frauenchor

Egon Poppe



6



11



15



19



23



# Zu Bethlehem geboren

T: Friedrich Spee 1637 - M: Paris 1599 / geistl. Köln 1638

Gemeinsam aufführbar mit dem Chorsatz für Frauenchor

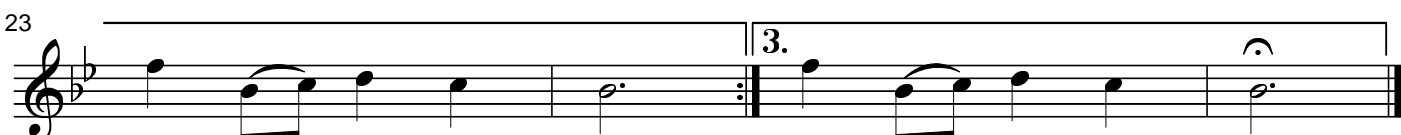
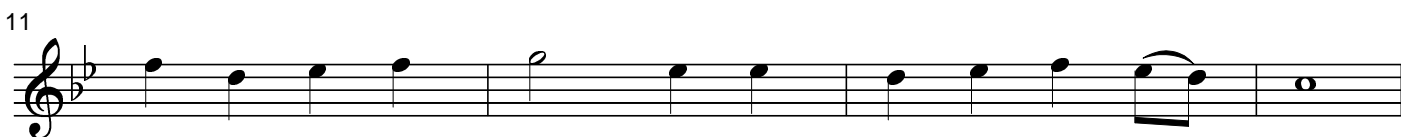
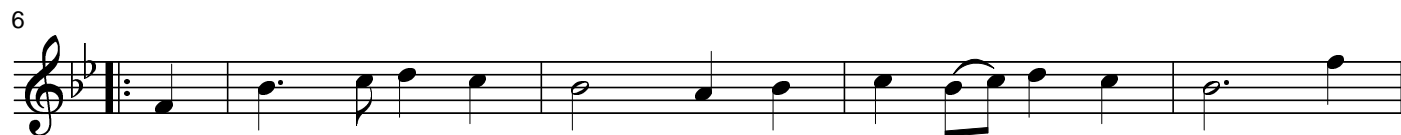
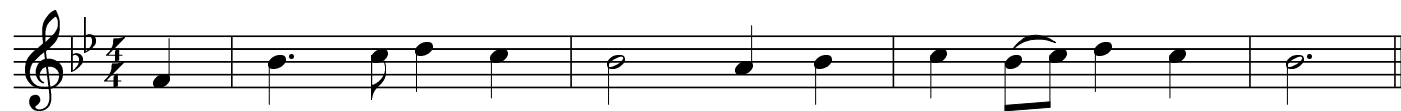
Egon Poppe

Musical score for Viola, titled "Zu Bethlehem geboren". The score is in 4/4 time and B-flat major. It consists of six staves of music, with measure numbers 6, 11, 15, 19, and 23 indicated at the beginning of each staff. The music features a variety of note values, including eighth and sixteenth notes, and rests. There are three first endings (1.) and two second endings (2.) marked throughout the piece. The score concludes with a final cadence.

# Zu Bethlehem geboren

T: Friedrich Spee 1637 - M: Paris 1599 / geistl. Köln 1638  
Gemeinsam aufführbar mit dem Chorsatz für Frauenchor

Egon Poppe



# Zu Bethlehem geboren

T: Friedrich Spee 1637 - M: Paris 1599 / geistl. Köln 1638

Gemeinsam aufführbar mit dem Chorsatz für Frauenchor

Egon Poppe

Musical score for Violin 2, titled "Zu Bethlehem geboren". The score is written in G minor (two flats) and 4/4 time. It consists of seven staves of music, with measure numbers 5, 9, 12, 16, 20, and 24 indicated at the beginning of their respective staves. The music features a melodic line with various rhythmic values, including eighth and sixteenth notes, and rests. There are several slurs and ties used throughout the piece. A first ending (1.) and second ending (2.) are present between measures 16 and 20. A third ending (3.) is located at the end of the piece, starting at measure 24. The score concludes with a double bar line.

# Zu Bethlehem geboren

T: Friedrich Spee 1637 - M: Paris 1599 / geistl. Köln 1638

Gemeinsam aufführbar mit dem Chorsatz für Frauenchor

Egon Poppe

